



Catenin-γ Monoclonal Antibody

Catalog No	YP-Ab-16824
Isotype	IgG
Reactivity	Human
Applications	WB;IHC;IF;ELISA
Gene Name	JUP
Protein Name	Junction plakoglobin
Immunogen	Purified recombinant fragment of human Catenin-γ expressed in E. Coli.
Specificity	Catenin-γ Monoclonal Antibody detects endogenous levels of Catenin-γ protein.
Formulation	Ascitic fluid containing 0.03% sodium azide,0.5% BSA, 50%glycerol.
Source	Monoclonal, Mouse
Purification	Affinity purification
Dilution	Western Blot: 1/500 - 1/2000. Immunohistochemistry: 1/200 - 1/1000. Immunofluorescence: 1/200 - 1/1000. ELISA: 1/10000. Not yet tested in other applications.
Concentration	1 mg/ml
Purity	≥90%
Storage Stability	-20°C/1 year
Synonyms	JUP; CTNNG; DP3; Junction plakoglobin; Catenin gamma; Desmoplakin III; Desmoplakin-3
Observed Band	
Cell Pathway	Cell junction, adherens junction . Cell junction, desmosome . Cytoplasm, cytoskeleton . Membrane ; Peripheral membrane protein . Cytoplasmic in a soluble and membrane-associated form.
Tissue Specificity	Cervix carcinoma,Epidermal carcinoma,Epithelium,Leukocyte,Lung,Lung carcinoma,Place
Function	disease:Defects in JUP are the cause of familial arrhythmogenic right ventricular dysplasia type 12 (ARVD12) [MIM:611528]; also called arrhythmogenic right ventricular cardiomyopathy type 12 (ARVC12). ARVD is an autosomal dominant disease characterized by partial degeneration of the myocardium of the right ventricle, electrical instability, and sudden death. It is clinically defined by electrocardiographic and angiographic criteria; pathologic findings, replacement of ventricular myocardium with fatty and fibrous elements, preferentially involve the right ventricular free wall.,disease:Defects in JUP are the cause of Naxos disease (NXD) [MIM:601214]. NXD is an autosomal recessive disorder combining diffuse non-epidermolytic palmoplantar keratoderma with arrhythmogenic right ventricular dysplasia/cardiomyopathy and woolly hair.,function:Common junctional plaque protein. The membrane-assoc

**Background**

This gene encodes a major cytoplasmic protein which is the only known constituent common to submembranous plaques of both desmosomes and intermediate junctions. This protein forms distinct complexes with cadherins and desmosomal cadherins and is a member of the catenin family since it contains a distinct repeating amino acid motif called the armadillo repeat. Mutation in this gene has been associated with Naxos disease. Alternative splicing occurs in this gene; however, not all transcripts have been fully described. [provided by RefSeq, Jul 2008],

matters needing attention

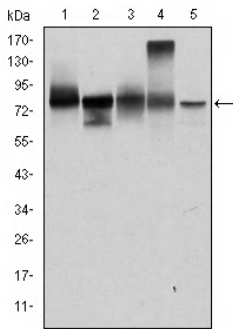
Avoid repeated freezing and thawing!

Usage suggestions

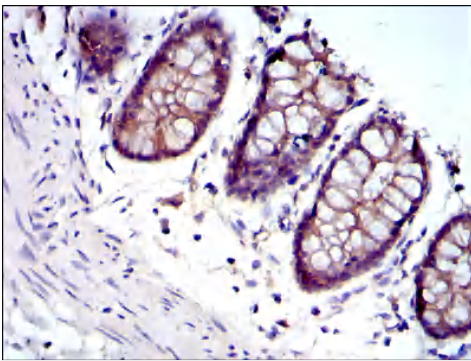
This product can be used in immunological reaction related experiments. For more information, please consult technical personnel.



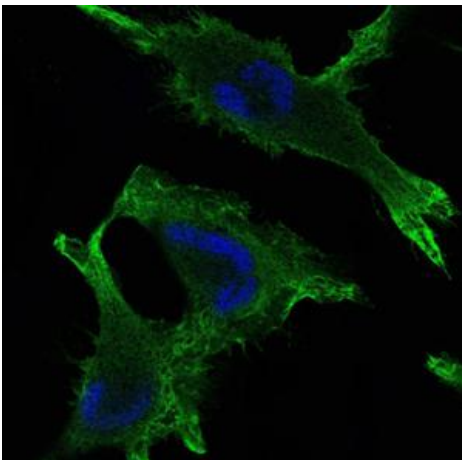
Products Images



Western Blot analysis using Catenin- γ Monoclonal Antibody against T47D (1), MCF-7 (2), SKBR-3 (3), A431 (4) and HEK293 (5) cell lysate



Immunohistochemistry analysis of paraffin-embedded rectum tissues with DAB staining using Catenin- γ Monoclonal Antibody.



Immunofluorescence analysis of U251 cells using Catenin- γ Monoclonal Antibody (green). Blue: DRAQ5 fluorescent DNA dye.

